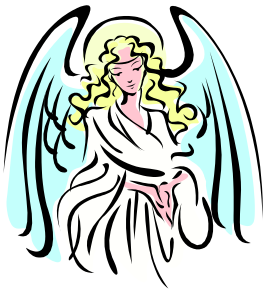


# CHILTON FOLIAT WI NEWSLETTER

## December 2010



Peace on  
Earth and  
Good Will to



### Next General Meeting

Our next WI meeting will be the start of a new year and a chance to shed the extra inches with some gentle exercise.

**Mrs. Tottingham** will be guiding us through a very gentle **Tai – Chi** session. No need for special clothes and there will be a chance for the more adventurous ladies to ‘stretch’ themselves, (excuse the pun!). **Thursday 13<sup>th</sup> January** in the village hall starting at 7.30pm.

This is an open meeting so please invite friends and family to come along for what I am sure will be some jolly good fun.

Cameras will be limited !!



### Chilton Foliat News

Carols at Church and Village Hall social for all the family **Friday 17<sup>th</sup> December** starting at **6.30pm** in the Church grounds. The children

are invited to do the countdown to the turning on of the lights, so come along and enjoy this lovely start to Christmas.

The Wheatsheaf will be holding a **Las Vegas Casino Night** on New Years Eve. Fancy dress is optional but think Vegas with all it's glitz !

The Chilton web site has another volunteer helping to advertise for you as well as being a wonderful information forum. Don't forget the gossip column, there for you to have your say. WI news and diary events are always published on the site for your convenience.



### Trable Table

It's a sad fact but following Christmas we may have a gift or two that is surplus to requirements so the **trable** table is a good way of re-cycling and making a few pennies or you could donate it to our raffle

table. The newly launched '**trable table**' is there to sell anything from fresh produce to home made crafts, books or bric-a-brac and just 10% goes to WI funds. Please price your item or state if you prefer to donate the revenue to subs, thankyou.



Dear friends, we hope you have a wonderful Christmas and may your New Year be filled with Peace, Health and Happiness. **Ellie Skehan**



*Any problems with transport or inquiries regarding the WI please contact the secretary by email:*

[womens.institute@chiltonfoliat.com](mailto:womens.institute@chiltonfoliat.com)